

## Printed Circuit Assembly Stress Analysis Software

# PCAS-200A NEW

Report creation and analysis software in accordance with IPC/JEDEC-9704A

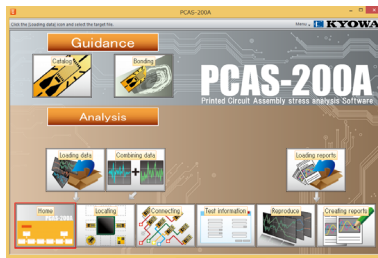
- ❑ Easy operation
- ❑ Analyzes KS2 files recorded by our measuring instruments.
- ❑ Outputs the analyzed results in CSV files.

PCAS-200A creates stress analysis report in accordance with IPC/JEDEC-9704A.

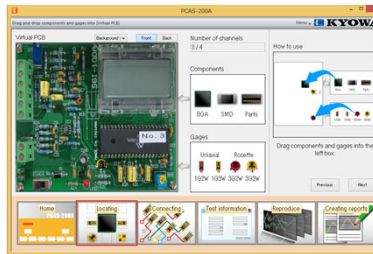
“Maximum Principal Strain”, “Minimum Principal Strain”, “Diagonal Strain”, “Strain Rate”, “Time Series graph”, “Strain Rate graph”

\* Evaluation method for printed circuit assembly using strain gages is regulated by IPC/JEDEC-9704A and it is valid for quality evaluation or failure analysis.

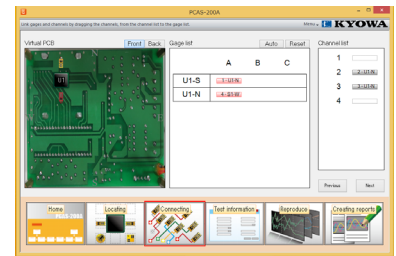
### Easy to create reports



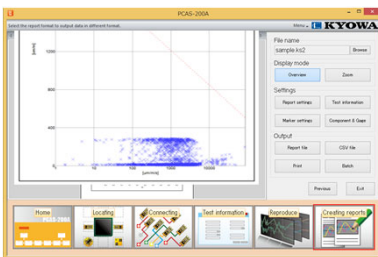
① Loading data



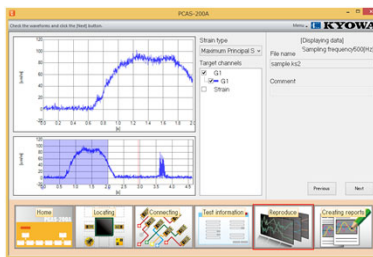
② Location



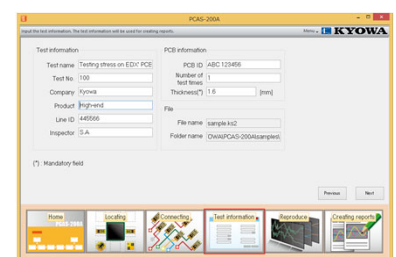
③ Setting target channels.



⑥ Creating reports



⑤ Checking graphs



④ Test information

## Specifications

OS	Windows Vista®, Windows® 7, Windows® 8, 8.1, or Windows®10, Japanese/English 32, 64 bits support
CPU	Intel Core i3 or advanced
Memory	If 32-bit OS, 2GB or more If 64-bit OS, 4GB or more
Display	Resolution: 1024 × 768 pixels or more
Input	File formats: Kyowa standard file format (KS2) Applicable channels: Analog channels only Number of channels: Up to 128 Number of data: Max. 18 millions per channel (5 kHz, 1h)
Output	File formats: KS2, CSV, and PCR (report file format) Output contents: Channel waveforms, analysis waveforms (CSV file only)
Report	Report types: Graphs and tables Graph-reports: Y-time graphs, and strain-rate graphs Table-reports: Maximum principal strain, minimum principal strain, diagonal strain, and strain-rate Clipboard: Copies graphs and tables to the clipboard. Allows other application software to use the data. Printing: Prints out reports. Report files: Allows PCR format report files to be saved, read and edited. Batch processing: Batch process of multiple files. (Printing report or CSV data)

## Main measuring instruments that create KS2 files



### PCD-400A/430A

- Connecting the sensor interface to a PC via USB port, the PC will become a measuring instrument.
- Applicable sensors are strain gages and strain gage transducers.
- Besides, voltage signals can also be measured by a PCD-430A.
- By stacking them, up to 16 channels can be extended easily.



### EDX-200A series

- Built-in real-time digital filters enables acquisition of clear waveform.
- High-speed/low-speed dual sampling function, enables reducing recorded data while measurement of fast and slow phenomena at the same time.
- In combination with various EDX's conditioner cards, the high-end compact universal recorder EDX-200A can cope with a variety of measurement purposes.

### Kyowa Americas Inc.

39555 Orchard Hill Place Suite 159 Novi MI 48375, USA  
 TEL: 1-248-348-0348 FAX: 1-248-348-0346  
 E-mail: sales@kyowa-americas.com  
 Web: <http://www.kyowa-ei.us/>



### Safety Precautions

Be sure to observe the safety precautions given in the instruction manual, in order to ensure correct and safe operation.

• Specifications are subject to change without notice for improvement.

EL\_H27-12c

Manufacture's Representative

January 2018