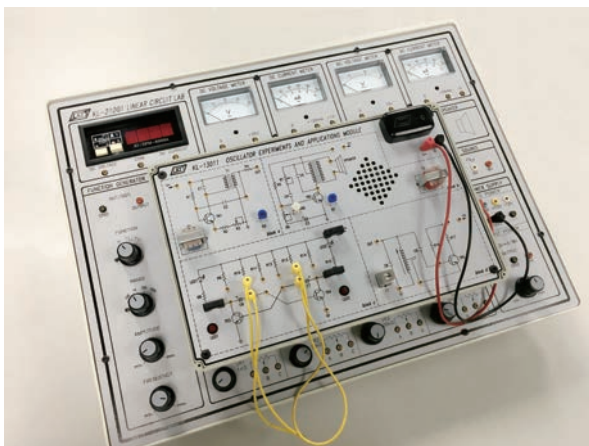


KL-100

Linear Circuit Lab(1)- Electric Circuit Lab

The KL-100 Linear Circuit Lab (1) Electric Circuits Lab is a comprehensive and self-contained system.

All the necessary equipment for electric circuit experiments are installed on the main unit.



- Ideal for electric circuit experiments and design exercises.
- Integrated trainer with the complete curriculum.
- Equipped with power supplies and test systems for easy and efficient experimentation.
- Universal breadboard (1680 tie points) for circuit design and prototyping.

● Modular design : plug and learn



Complete experiment and teaching materials

● **Basic Electricity**

DC voltage measurement
Using an ohmmeter
Resistor characteristics
DC current measurement
Ohm's law...

● **Magnetism**

Magnetic devices
Magnetic field
Drawing magnetic curves
Magnetic field strength
Lenz's and Faraday's laws...

● **Basic Electronic Circuits**

Diode characteristics
Rectifier circuit
Filter circuit
Zener diode characteristics
LED characteristics...

● **Simple Electronic Circuits**

Simple amplifier
Complementary amplifier
Voltage regulator
Push-pull amplifier
Wheatstone bridge...

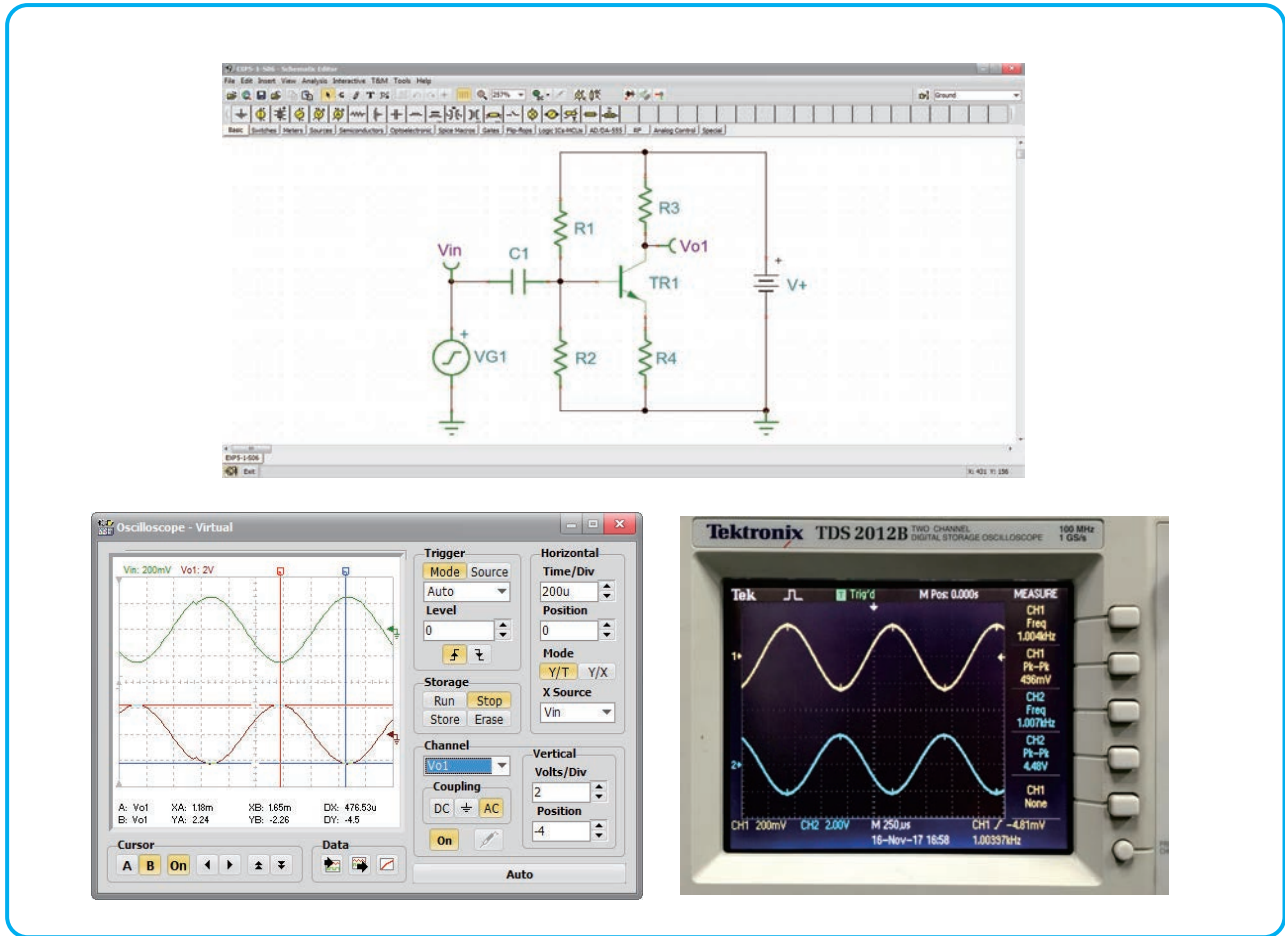
● **Industrial Control Applications**

CDS characteristics
Light-controlled circuit
Thermistor characteristics
Temperature-controlled circuit
Sound controlled circuit...

● **Oscillator Characteristics and Applications**

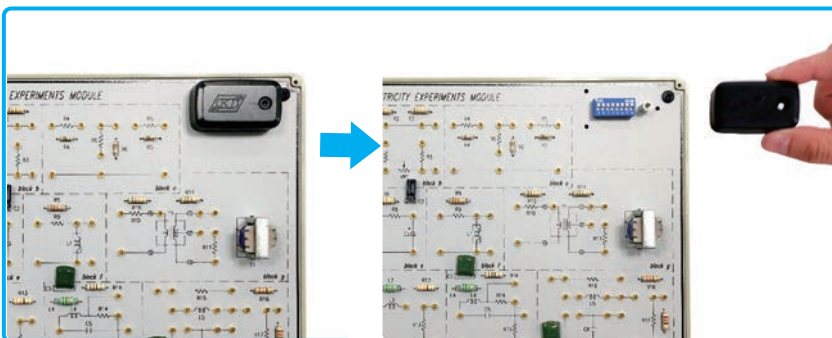
Blocking oscillator
Electronic birdcall circuit
Astable multivibrator
LED flasher circuit
LC resonant circuit...

• The powerful circuit simulator software



- ◆ Built-in circuit simulation of experiment modules
- ◆ Fault simulation is allowed
- ◆ Users can flexibly compare the simulation analysis result to hardware signal output
- ◆ Support virtual instrument

• Module with fault switch



Each module is equipped with an 8-bit DIP switch for circuits fault simulations. Users can practice troubleshooting by setting the DIP switch to different positions.